



Thinking about university?

A guide for Aotearoa New Zealand students and whānau



2024



Nau mai piki mai tāuti mai

Welcome to 'Thinking about university? A guide for NZ students'.

This guide is to support you and your whānau when thinking about studying at one of Aotearoa New Zealand's eight universities.

It's a starting point to help you plan how to successfully move into university life.

Read the latest information on our website:

www.thinkingaboutuni.nz

Visit each university website for more detailed information.

What to study and where? is a booklet where you can see all the major subjects on offer at each university. A pdf version is available on our website:



Follow us on Instagram:

 **[thinking_about_uni](https://www.instagram.com/thinking_about_uni)**

Information for international students is at:

www.universitiesnz.ac.nz/international-students

These resources have been collated by Universities New Zealand—Te Pōkai Tara.

For more information, contact us at: **studentguide@universitiesnz.ac.nz**

Disclaimer – Although we've made every effort to ensure accuracy, we recommend you check university websites for the latest information.

Universities New Zealand—Te Pōkai Tara is the representative body for New Zealand's eight universities.

April 2023



Section

Page

1	Welcome	2
2	Why a university education?	4
3	Choosing a university	6
4	What to study and where?	8
5	Introducing New Zealand's universities	9
6	Semester dates 2024	26
7	Get ready checklist	29
8	Get in: Admission to university	32
9	Get sorted: StudyLink, scholarships, accommodation	37
10	Get more experience	42
11	Student life: a typical day	44

Why a university education?

He aha e ako
ai ki te whare
wānanga?

Think of a university education as an investment that gives you options and opportunities for your future.



University is also an opportunity for you to

ENGAGE

Me aro

With leading teachers and researchers from a top 3% world-ranked university.

Through internships and work placements with employers and industry.



DEVELOP

Me tipu

Specialist knowledge. Critical thinking, research and analytical skills. Communication, interpersonal and information technology skills.

CONNECT

Me hono

ENHANCE

Me whakapakari

Cultural understanding, global awareness and community involvement.

DISCOVER

Me whakahura

Student life—student groups, clubs and activities.

EXPERIENCE & EXPLORE

Me rongō me rapa

Study abroad and international student exchange programmes.

Choosing a university

Ko tēhea te whare wānanga mōu?

A little planning will help you make the most of the opportunities at university.

All eight New Zealand universities are ranked in the top 3% in the world and offer quality tertiary education and student support—so they're all good options!

Some things you may want to consider:

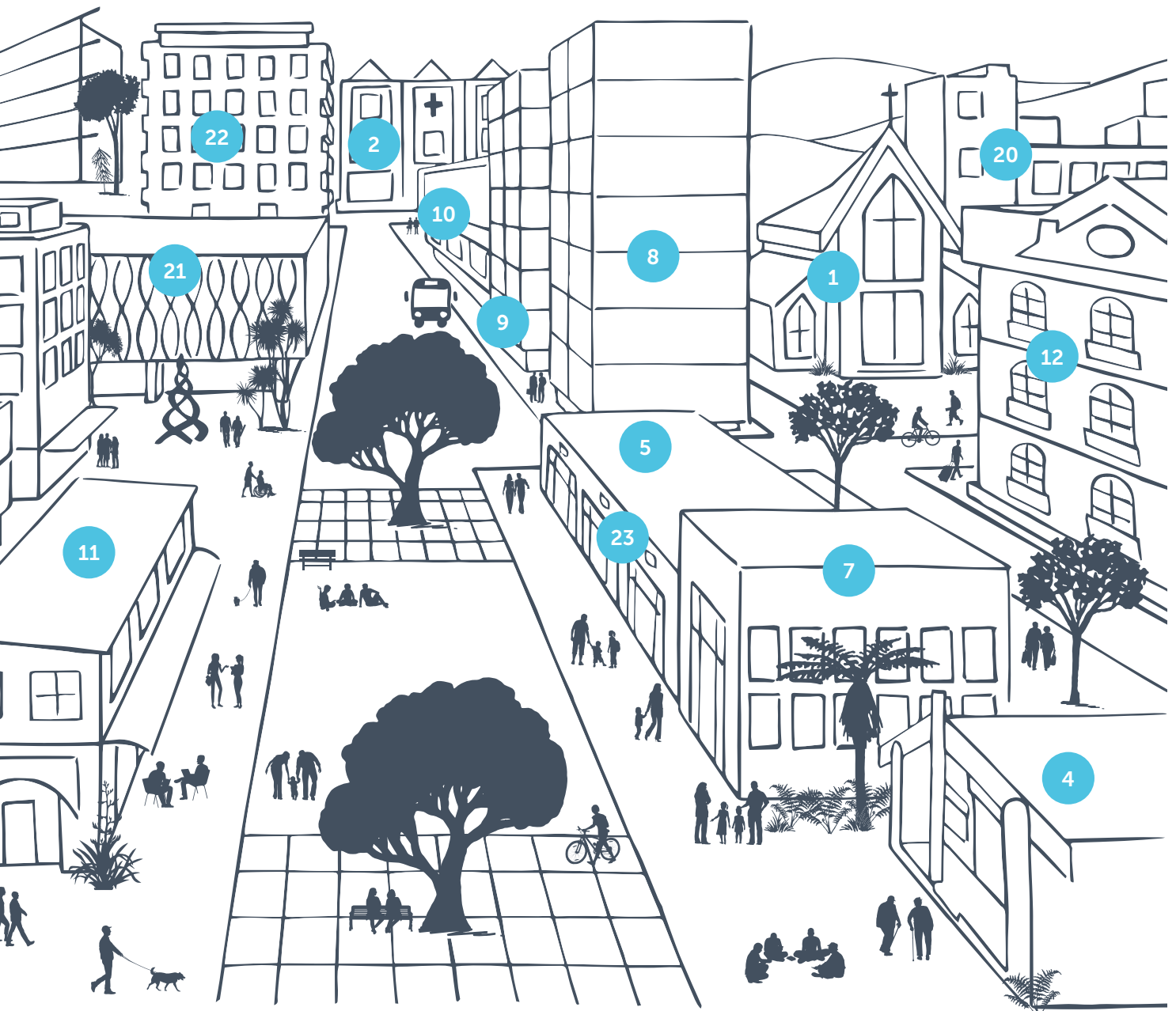
- What are my interests and strengths? What do I love doing? What are my future goals?
- Which universities offer what I want to study?
- Where is the campus located? Is it in a city, out of town or close to home?
- What is the student population?
- What is the vibe of the university?
- Does the university have all the facilities I'd want?
- Is there university accommodation—Halls of Residence?
- What student support services are available?



A university is a community, offering a range of support services and facilities on campus to enable you to achieve at your best, and to keep you motivated while you're on your study journey. Even if you are considering studying by distance, you still have access to a range of support services.

Facilities and services

- | | | | | | |
|---|----------------------------------|----|------------------------------------|----|----------------------------------|
| 1 | Chaplaincy | 9 | Disabilities services | 16 | Fees and Finance |
| 2 | Medical Centre | 10 | Book shop | 17 | Scholarships |
| 3 | Sport and Recreation | 11 | Cafés and shops | 18 | Māori Student Academic Support |
| 4 | Marae | 12 | Accommodation / Halls of Residence | 19 | Pacific Student Academic Support |
| 5 | Careers Centre | 13 | Student clubs | 20 | Student Wellbeing |
| 6 | Student Union / student advocacy | 14 | Academic and Learning Support | 21 | Library |
| 7 | Child Care | 15 | Admission and Enrolment | 22 | Health services |
| 8 | Counselling | | | 23 | Student Job Search |





What to study and where?

Ka ako i te aha,
ka ako ki hea?

Universities offer a wide range of subjects to study at undergraduate level. The main undergraduate qualification is called a bachelor's degree and the subject you choose to specialise in is called your major.

We've put together a list of degrees and majors offered at each of New Zealand's eight universities to help you decide what to do and where to go.

Check out our booklet:



Or read it on our website:

www.thinkingaboutuni.nz/study-options

Introducing New Zealand universities

Nei ngā whare
wānanga o
te motu

New Zealand's eight universities offer a wide range of study opportunities and all are ranked within the world's top 500 (3%).

Studying at a university develops your professional skills along with important life skills such as analysis, critical thinking, communication and innovation. You will use these through your whole career, not just your first job.





Waipapa Taumata Rau, University of Auckland

New Zealand's leading university

Main campus: Auckland City

Other campuses: Newmarket, Epsom, Grafton, Tai Tonga (Manukau) and Tai Tokerau (Whāngarei)

The university is ranked as New Zealand's leading university, with degrees that are world-class and internationally recognised. Auckland's research-led programmes attract a high level of teaching professionals. You will learn from people who are passionate about their chosen fields.

Faculties

Arts

Business School

Creative Arts and Industries

Education and Social Work

Engineering

Law

Medical and Health Sciences

Science

Auckland Bioengineering Institute

Liggins Institute

Student population

Total (EFTS)	36,700
--------------	---------------

Total (Students)	45,850
------------------	---------------

Pre-degree	1,150
------------	--------------

Undergraduate	27,635
---------------	---------------

Postgraduate	18,110
--------------	---------------

Domestic	37,610
----------	---------------

International	8,235
---------------	--------------

Māori	3,340
-------	--------------

Pacific	4,475
---------	--------------

Part-time	13,090
-----------	---------------

Full-time	32,760
-----------	---------------

2021 data. Source: Ministry of Education. Custom data for Universities New Zealand (extracted 13 April 2022). Numbers have been rounded for confidentiality reasons.

0800 61 62 63 | auckland.ac.nz



UniofAkl



University of Auckland



snapuoa



AucklandUni



universityofauckland



UNIoFAUCKLAND

Ākonga Māori

Tū ake i te kei o te waka mātauranga. Tū ake nei i Waipapa Taumata Rau. Nau mai, haere mai.

Waipapa Marae (City campus), Tutahi Tonu Marae (Epsom campus), Tai Tonga campus in Manukau and Te Papa Ako o Tai Tokerau in Whangārei provide a home away from home for taira Māori and their whānau.

The university's Kaitakawaenga Māori provides information and support to taira and their whānau, including advice on entry, enrolment, scholarships and financial opportunities, as well as pastoral guidance.

Tuākana is the university-wide learning community for enhancing the success of taira Māori, offering study wānanga, whakawhanaungatanga and workshops.

Ngā Tauira Māori is the Māori student association at the University of Auckland. It is responsible for advocating better conditions for taira Māori on campus.

WEBSITE KEY WORD SEARCH: Māori, Tuākana

www.auckland.ac.nz/en/education/study-with-us/maori-at-the-faculty/maori-student-support-services.html



Pacific students

Tālofa lava, Mālō e lelei, Kia orana, Bula vinaka, Fakatalofa atu, Fakaalofa lahi atu, Halo olaketa, Ia orana, Mauri, Aloha, Mālō ni, Hafa adai.

Our Fale Pasifika is the centre of the university Pacific community, and our Tai Tonga campus in Manukau allows our Pacific students to attend New Zealand's leading university in the heart of the South Auckland community.

The university's Pacific Equity Adviser provides a range of student support services, including guidance with entry, enrolment and scholarship opportunities.

Tuākana is the university-wide learning community for enhancing the success of Pacific students, offering fonotaga and workshops.

WEBSITE KEY WORD SEARCH: Pacific, Tuākana

www.auckland.ac.nz/en/education/study-with-us/pacific-at-the-faculty/pacific-student-support-services.html





Te Wānanga Aronui o Tāmaki Makau Rau

Auckland University of Technology (AUT)

One of the world's best modern universities

Main campus: Auckland City

Other campuses: North Shore and Manukau

AUT's focus is on our students finding their greatness and preparing for a bright future and meaningful contribution. AUT is in the top 1% of universities worldwide and ranked in the top 50 universities under 50 years of age. We are the country's only university of technology.

AUT is the fastest growing postgraduate study destination in New Zealand. Our world-leading academics' research shapes the future, benefits communities, and informs our teaching.

We foster deep working relationships with industry and employers: 90% of AUT bachelor graduates complete a work placement or internship. AUT's unique commitment to excellence and equity makes a vital contribution to individuals, to communities, to Aotearoa and to the world.

Faculties

Business, Economics and Law

Culture and Society

Design and Creative Technologies

Health and Environmental Sciences

Māori and Indigenous Development

0800 288 864 | aut.ac.nz



Student population

Total (EFTS)	19,945
Total (Students)	27,140
Pre-degree	1,510
Undergraduate	19,890
Postgraduate	6,165
Domestic	23,290
International	3,850
Māori	2,640
Pacific	4,505
Part-time	8,160
Full-time	18,985

2021 data. Source: Ministry of Education. Custom data for Universities New Zealand (extracted 13 April 2022). Numbers have been rounded for confidentiality reasons.

Ākonga Māori

E te hunga pikoko ki te mātauranga, nau mai piki mai ki te Wānanga Aronui o Tāmaki Makau Rau.

Ngā Wai o Horotiu marae is located at the city campus. It serves as a whānau, cultural and spiritual centre.

Programmes and activities across the university are dedicated to taurira Māori achievement and success.

Takawaenga Māori – Māori Liaison Services can help with advice (academic, cultural or personal), financial matters (scholarships and administration), advocacy (faculty and community) and mentors.

Tītahi Ki Tua (TKT) offers taurira a network where they can come together to share ideas and identity, socialise and meet other taurira Māori, all within a supportive marae-based environment.

WEBSITE KEY WORD SEARCH: Māori, Māori Student Support
www.aut.ac.nz/student-life/student-support/maori-student-support



Pacific students

Warm Pacific greetings!

AUT offers comprehensive support for our diverse Pacific communities.

Our Student Hub is always a good place to start if you are looking for support and advice with your studies, health, welfare and anything else on living and studying in New Zealand.

Our Office of Pacific Advancement oversees a range of Pacific-focused student engagement activities. Through our Oceanian Leadership Network, you can access initiatives that focus on leadership development and academic, cultural and social support.

WEBSITE KEY WORD SEARCH: Pacific, Pacific Support
www.aut.ac.nz/student-life/student-support/pacific-student-support





THE UNIVERSITY OF
WAIKATO
Te Whare Wānanga o Waikato

Te Whare Wānanga o Waikato

The University of Waikato

Ko Te Tangata, For the People

Main campus: Hamilton

Other campus: Tauranga

University of Waikato graduates are known for making a big difference in the world around them and we look forward to helping you do the same. Our students have a desire to make their mark and pursue a career with purpose.

Our flexible degree structures mean you can study a broad range of subjects to shape a qualification that matches your strengths and career interests. You'll gain hands-on experience through our work-integrated learning programme, giving you a competitive edge with potential future employers and helping you stand out from the crowd as you start your career.

Hamilton campus

Our Hamilton campus sits on 65 hectares of stunning grounds complete with cafés, lakes, vibrant Boon Street artworks and accommodation.

Tauranga campus

Our Tauranga campus, which opened in 2019, has enhanced the range of qualifications available to students in one of New Zealand's most sought-after locations. The CBD campus offers a modern learning environment where students, researchers, the community and industry can work together.

Divisions

Arts, Law, Psychology and Social Sciences

Education

Health, Engineering, Computing and Science

Management

Māori and Indigenous Studies

0800 924 528 | waikato.ac.nz



Student population

Total (EFTS)	10,605
--------------	---------------

Total (Students)	13,900
------------------	---------------

Pre-degree	960
------------	------------

Undergraduate	9,555
---------------	--------------

Postgraduate	3,880
--------------	--------------

Domestic	11,125
----------	---------------

International	2,780
---------------	--------------

Māori	2,835
-------	--------------

Pacific	1,005
---------	--------------

Part-time	4,380
-----------	--------------

Full-time	9,520
-----------	--------------

2021 data. Source: Ministry of Education. Custom data for Universities New Zealand (extracted 13 April 2022). Numbers have been rounded for confidentiality reasons.

Ākonga Māori

Māori students make up nearly a quarter of our student population, so are visible and actively engaged in all aspects of university life. We have lots of initiatives to support our taura Māori, including Te Kāhui Pīrere transition-to-university programme, Te Āhurutanga leadership programme, Māori mentors, scholarships and awards, and even a free bus from our surrounding regions.

Both Waikato campuses offer the only full immersion te reo Māori diploma at a university, Te Tohu Paetahi, which has helped revitalise te reo Māori for 30 years. Our Māori academic staff are internationally recognised leaders in Indigenous knowledge, so you'll be learning from the best.

Our Rōpū Māori are active across campus, leading events that bring new and returning students together, connecting you into the whānau. From the moment you arrive on campus and attend the pōwhiri, through to your official graduation on our university marae, Te Kohinga Mārama, this is a place where you can feel at home.

Nau mai, haere mai ki Te Whare Wānanga o Waikato.

WEBSITE KEY WORD SEARCH: Māori, Māori Student Support

www.waikato.ac.nz/maori



Pacific students

Kia orāna, mālō e lelei, tālofa lava, fakaalofa lahi atu, ni sa bula vinaka, tālofa nī, halo olaketa, ko na mauri, tālofa, aloha and warm Pacific greetings.

We have a great team of dedicated Pacific support staff and resources to help you achieve your career aspirations. This includes our Imua initiative, which supports Pacific students in the transition to university, and our Pacific Excellence Scholarship.

We have many Pacific student associations you can join, and the 'Conch' on the Hamilton campus is a space for you to enjoy fono, seminars, workshops, social gatherings and community events.

WEBSITE KEY WORD SEARCH: Pacific, Pacific Support
www.waikato.ac.nz/students/pacific-support



Te Kunenga ki Pūrehuroa Massey University

New Zealand's defining university

Main campus: Manuwatū (Palmerston North)

Other campuses: Ōteihā (Auckland), Pukeahu (Wellington) and Distance

Massey is world leading in many academic disciplines and fields of research and consistently ranked in the top 3% of universities internationally (QS World University Rankings).

We offer flexible ways to study: face to face, distance learning or a hybrid of both. With our award-winning teachers, well-connected lecturers, world-renowned researchers, committed support staff and work-integrated learning, we provide the ideal learning environment to help you succeed in your studies.

Massey is committed to being a Te Tiriti o Waitangi-led university, demonstrating authentic leadership in contemporary Aotearoa New Zealand as we uphold the founding document of our nation and its principles through our practice.

Colleges

Creative Arts

Health

Humanities and Social Sciences

Sciences

Massey Business School

0800 627 739 | massey.ac.nz



Student population

Total (EFTS)	18,810
Total (Students)	30,030
Pre-degree	2,340
Undergraduate	18,995
Postgraduate	9,230
Domestic	25,775
International	4,255
Māori	3,780
Pacific	1,735
Part-time	15,585
Full-time	14,445

2021 data. Source: Ministry of Education. Custom data for Universities New Zealand (extracted 13 April 2022). Numbers have been rounded for confidentiality reasons.

Ākonga Māori

Piki mai, kake mai, nau mai, haere mai ki Te Kunenga Ki Pūrehuroa.

Massey University's Tiriti-led strategy has revived a focus on providing cultural, pastoral and academic support to support Ākonga Māori. This includes Te Rau Tauawhi, the Māori Student Centre, with a team dedicated to helping taura navigate university life and succeed.

Te Pūtahi-a-Toi, the School of Māori Knowledge, is the cultural heart of the Manawatū campus, while the Pukeahu Marae development project will provide an exciting cultural and learning space at the Wellington campus.

Taura Māori are well supported on each campus and Māori student advisers are available to help with enrolment and career advice.

Te Rau Puawai Workforce Programme provides bursaries and incredibly successful learning support for students in the field of Māori mental health.

WEBSITE KEY WORD SEARCH: Māori, Māori student advisers

www.massey.ac.nz/māorimassey

Facebook: @MaoriMassey

Instagram: Maori@Massey



Pacific students

Kia orana, Ni sa bula Vinaka, Fakaalofa lahi atu, Tālofa lava, Mālō ni, Mālō e lelei, Fakatalofa atu, Kam na bane ni mauri.

At Massey University we are committed to providing Pacific students with a strong sense of community, offering a fale (dedicated hub) for students to gather and study and support each other at each campus.

We have strong support networks to empower you to succeed and offer a range of support including academic advice and tutoring, mentoring and a safe place to talanoa with Pacific students and staff.

Pacific recruitment advisors are also available to help you transition into tertiary study at Massey University by assisting you with the enrolment process and advice on scholarships and other funding.

WEBSITE KEY WORD SEARCH: Pacific Students

www.massey.ac.nz/pacific





Te Herenga Waka— Victoria University of Wellington

Main campus: Wellington

Te Herenga Waka—Victoria University of Wellington draws on its capital city location to carry out world-class research and teaching, and to make connections here and around the world.

In partnership with Wellington city and region, we provide a unique student experience. Our students feel a sense of belonging to a vibrant and inclusive university and civic community.

This is a place where learning flourishes and people are equipped to transform society. We grow the capability, skills and confidence of all our students and support them to pursue their passion and excel in their chosen area of study.

Faculties

Architecture and Design Innovation

Education

Engineering

Graduate Research

Health

Humanities and Social Sciences

Law

Science

Wellington School of Business and Government

0800 04 04 04 | wgtn.ac.nz



Student population

Total (EFTS)	18,355
Total (Students)	23,055
Pre-degree	195
Undergraduate	16,830
Postgraduate	6,395
Domestic	20,710
International	2,345
Māori	2,560
Pacific	1,480
Part-time	7,035
Full-time	16,020

2021 data. Source: Ministry of Education. Custom data for Universities New Zealand (extracted 13 April 2022). Numbers have been rounded for confidentiality reasons.

Ākonga Māori

Te Herenga Waka—Victoria University of Wellington is a global—civic university with our marae at our heart.

The name of our marae – Te Herenga Waka – is the Māori name of the university and means the mooring place of canoes. Located on our Kelburn campus, the marae operates as a community-based marae and a teaching facility. It is currently closed for construction of the Living Pā, which when it opens in 2024 will be one of the most sustainable educational facilities in the world.

The university has a wide range of services to support Māori students, beginning with when you are considering studying in Wellington. The Māori advisers in Te Tari Takawaenga, the Future Students Team, can help you and your whānau with entrance and admission information, course planning and queries about accommodation, grants and scholarships. An orientation programme specifically for new taura Māori will also help ease your transition into university study.

Āwhina, the Māori student support team, works across all campuses and provides a focal point for taura Māori. The Māori Learning Adviser at Te Taiako—Student Learning offers one-on-one sessions and workshops to help you develop your writing, study and assignment skills.

Ngāi Taura, the Māori students' association, represents the interests of all taura Māori at the university. It also runs a range of social and cultural events, as do other subject-based Māori student associations.

WEBSITE KEY WORD SEARCH: Māori, Āwhina, marae.
www.wgtn.ac.nz/maori-hub

Pacific students

Tālofa lava, Kia orana, Mālō e lelei, Ni sa bula vinaka, Fakaalofa lahi atu, Fakatalofa atu, Kam na mauri, Gud de tru, Kaselehlie, Halo olgeta, Ia orana, Aloha mai e, Noa'ia, Kia ora, warm Pasifika greetings.

Te Herenga Waka—Victoria University of Wellington is committed to Pasifika student success through excellent research, quality teaching and learning experiences, appropriate support and raising Pasifika participation and academic achievement.

The Office of the Assistant Vice-Chancellor (Pasifika) is led by Associate Professor Hon Luamanuvao Dame Winnie Laban DNZM and provides advocacy and support for Pasifika students, enrolment, retention and completion of study.

The Pasifika Student Success Team includes engagement advisers who work across all the faculties. It is the university 'āiga (family) which provides students the necessary tools to navigate their transition into tertiary study, with holistic support, course-specific study sessions, exam preparation, learning and development workshops, and cultural support.

A Pasifika learning adviser, Pasifika Future student advisers, a Pasifika library navigator and Pasifika student liaison, an Equity Scholarships Programme Manager and 10 Pasifika cultural and academic student associations under the umbrella of the Pasifika Students' Council are also available.

WEBSITE KEY WORD SEARCH: Pasifika
www.wgtn.ac.nz/pasifika





Te Whare Wānanga o Waitaha

University of Canterbury

**Be prepared to change the world.
Tangata Tū, Tangata Ora**

Main campus: Christchurch

UC is a future-focused, globally recognised university with opportunities outside traditional learning that give our students the chance to find themselves, to connect with others and to positively contribute to a changing world. When you graduate, you join a whānau of alumni more than 140,000 strong who are effecting change across the globe.

Faculties

Arts
Education
Engineering
Science
UC Business School
Law
Health

Student population

Total (EFTS)	16,210
Total (Students)	19,385
Pre-degree	555
Undergraduate	11,785
Postgraduate	7,625
Domestic	17,415
International	1,970
Māori	1,880
Pacific	615
Part-time	4,465
Full-time	14,920

2021 data. Source: Ministry of Education. Custom data for Universities New Zealand (extracted 13 April 2022). Numbers have been rounded for confidentiality reasons.

0800 827 748 | canterbury.ac.nz



Ākongā Māori

Nau mai, haere mai ki te Whare Wānanga o Waitaha.

UC Māori offers support, advice and guidance for all ākongā Māori studying at Te Whare Wānanga o Waitaha – University of Canterbury (UC).

Our initiatives focus on supporting ākongā Māori to succeed academically, while encouraging personal growth and connection to Māori community and culture.

Manaakitanga is important to us. Whether you are thinking about university study or enrolling for the first time, UC Māori can provide you with guidance and support to ensure the study pathway you choose is right for you. We will continue to support you through to the completion of your chosen degree and also offer a range of services and initiatives designed to help you succeed:

- Academic support and guidance.
- Manaaki atu, manaaki mai—pastoral care, support and guidance.
- Tōia Mai—a noho marae experience for first-year ākongā Māori.
- Eke Panuku—our UC Māori Orientation event.
- Paihere—our UC Māori Tuākana-Tāina mentoring and leadership programme.
- Eke Tangaroa—our UC Māori Celebration for Māori graduands and graduates.
- Te Whare Ākongā o Te Akatoki Māori—the UC Māori Students' Study Centre.

Te Akatoki Māori Students' Association also offers many social activities.

WEBSITE KEY WORD SEARCH: Māori, Tuākana Tāina, Punenga

www.canterbury.ac.nz/support/akonga-maori



Pacific students

Tālofa lava, Mālō e lelei, Kia orana, Ni sa bula vinaka, Halo olaketa, Namaste, Kam na mauri, Fakaalofa lahi atu, la orana, Mahalo, Mālō ni, Kia ora and warm Pasifika greetings.

Pacific support services have been designed to ensure Pacific students get the most out of their studies.

The Pacific Development Team offers pastoral care and support to Pacific students and provides one-to-one peer support to them in their first year of study through a mentoring programme. Additional support is offered through the PASS (Pacific Academic Solutions and Success) programmes.

There are dedicated Pacific spaces onsite such as the Pasifika Student Fale, which provides a space for small Pacific student gatherings and tutorials, and our Pacific common room.

Pacific events such as Get Fresh, Pasifika Welcome Day, Jandals and Pasifika Graduation celebrations all help our students connect and build a healthy sense of belonging as a valued part of the wider university community.

WEBSITE KEY WORD SEARCH: Pacific

www.canterbury.ac.nz/support/get-support/pasifika





LINCOLN
UNIVERSITY
TE WHARE WĀNAKA O AORAKI

Te Whare Wānaka o Aoraki Lincoln University

A place to grow

Main campus: Te Waihora (Lincoln, Christchurch)

We believe great learning and growth are realised through generating impactful applied research, delivering industry-leading study programmes, offering state-of-the-art modern learning environments and cultivating deep global connections, collaborations and partnerships to ensure what we teach is relevant today and tomorrow.

Situated in Lincoln, Christchurch, our Te Waihora campus comprises 58 hectares of picturesque park-like grounds, surrounded by a further 447 hectares of commercial and demonstration farmland used for education and research purposes.

Our students are at the heart of all we do and our campus is celebrated for delivering an exceptional student experience. We aim to equip every student with a strong foundation for lifelong learning, positioning them for career success and making an impact in the land-based sector.

Faculties and division

Agriculture and Life Sciences

Agribusiness and Commerce

Environment, Society and Design

Student population

Total (EFTS)	2,530
Total (Students)	3,345
Pre-degree	385
Undergraduate	1,705
Postgraduate	1,325
Domestic	2,505
International	840
Māori	190
Pacific	60
Part-time	870
Full-time	2,470

2021 data. Source: Ministry of Education. Custom data for Universities New Zealand (extracted 13 April 2022). Numbers have been rounded for confidentiality reasons.

0800 10 60 10 | lincoln.ac.nz



LincolnUniNZ



Lincoln University
New Zealand



LincolnUniversityNZ



LincolnUniNZ



lincolnuninz

Ākonga Māori

Nau mai, tauti mai ki Te Whare Wānaka o Aoraki.

Lincoln is the first university to promote and commit to the consistent use of the Kāi Tahu dialect, as well as celebrate whānau, hapū and iwi mahika kai practices, research and innovation.

The university is committed to helping to develop the next generation of Māori leaders by offering industry-relevant, career-orientated programmes.

Lincoln has a comprehensive Māori Plan that seeks to enhance engagement with Māori communities to support student and staff aspirations, develop a culture of leadership among students and staff, develop a bicultural campus, contribute to the achievement of Māori research and learning outcomes and support and contribute to the Māori economy.

Te Awhioraki is an association that represents all Māori students on campus and is managed and run by Māori students themselves. It provides social, cultural and academic support to students and organises social events, wānaka and workshops.

WEBSITE KEY WORD SEARCH: Māori students
www.lincoln.ac.nz/maori-ki-aoraki



Pacific students

Kia orana, Tālofa lava, Mālō e lelei, Ni Sa Bula Vinaka,
Fakaalofa lahi atu, Tālofa nī, Fakatalofa atu, Halo oloketa.

Lincoln University has a longstanding association with the Pacific region and its communities, and aims to contribute to the educational and economic aspirations of Pacific people both within New Zealand and in the wider Pacific region.

Pacific students are able to engage in cultural, sporting and social activities on campus supported by the Pasifika Support Coordinator and Te Manutaki – the Māori and Pasifika Team and our Pacific Islands Student Association (LUPISA).

WEBSITE KEY WORD SEARCH: Pasifika students
www.lincoln.ac.nz/student-support/pasifika-ki-aoraki





Te Whare Wānanga o Ōtākou

University of Otago

'Only Otago' for academic excellence and outstanding experience

Main campus: Dunedin

Otago's specific research strengths are in the medical, biomedical, biological and natural sciences, the liberal arts, and law. Otago's outstanding academic reputation, strong research culture and vibrant campus lifestyle attract highly talented students from all over New Zealand and overseas.

Faculties

Health Sciences

Humanities

Sciences

Otago Business School

Student population

Total (EFTS)	19,565
Total (Students)	21,750
Pre-degree	380
Undergraduate	16,155
Postgraduate	5,520
Domestic	19,865
International	1,885
Māori	2,555
Pacific	1,320
Part-time	3,915
Full-time	17,835

2021 data. Source: Ministry of Education. Custom data for Universities New Zealand (extracted 13 April 2022). Numbers have been rounded for confidentiality reasons.

0800 80 80 98 | otago.ac.nz

Ākonga Māori

Nau mai, haere mai, ki Te Whare Wānanga o Ōtākou.

Otago tauira Māori and their whānau have access to a wide range of support services, as well as scholarships and a dedicated School of Māori, Pacific and Indigenous Studies, Te Tumu.

The Māori Centre—Te Huka Mātauraka offers a home away from home for tauira Māori, from pre-enrolment, Turāka Hou—Māori Orientation—through to pre-graduation celebrations, graduation and beyond.

Te Rōpū Māori o Te Whare Wānanga o Otago is the Māori Students' Association.

WEBSITE KEY WORD SEARCH: Māori, Māori Centre
www.otago.ac.nz/maoricentre



Pacific students

Kia Orana, Tālofa Lava, Kia Ora, Mālō e lelei, Ni sa bula Vinaka, Fakaalofa Lahi Atu, Tālofa nī, Fakatalofa atu, Halo olaketa, Mauri.

The Pacific Island Centre—Te Pokapū mā kā ākoka o kā Mouutere o Te Moana Nui a Kiwa supports Pacific students, their families and communities at Otago University.

The centre offers academic mentoring through the Taimane programme and can offer tutorial sessions. Supervised study nights are also held.

WEBSITE KEY WORD SEARCH: Pacific, Pacific Students
www.otago.ac.nz/pacific-at-otago





Qualifications

Ngā Tohu

University preparation programmes (New Zealand Qualifications Framework Levels 4/5)

All universities have foundation pathways for students who need further English language, academic and study skills preparation before undertaking undergraduate study. Foundation programmes generally run for up to one year of full-time study.

Bachelor's degree (NZQF Level 7)

Normally takes three years (full-time) and consists of a prescribed number of papers or courses. Typically, a bachelor's degree offers a great deal of flexibility and the opportunity for students to choose a programme appropriate for them.

Bachelor's degree with honours (NZQF Level 8)

An integrated four-year programme requiring more specialised study in the chosen major subject and frequently involving some independent research or investigation. You can also later choose to do a one-year programme of honours study following a standard bachelor's degree.

Graduate diploma / graduate certificate (NZQF Level 7)

A graduate diploma is a one-year (full-time) course of study for graduates. Prior learning or experience in the subject matter of the diploma is not always required, giving graduates an opportunity to add a qualification in a different major subject to that of their first degree. A graduate diploma may also be used as a bridging qualification to specialist postgraduate study.

A graduate certificate is a half-year (full-time) course of study.

Postgraduate diploma / postgraduate certificate (NZQF Level 8)

A postgraduate diploma is a one-year (full-time) course of study that builds on the same subject matter in the academic field of a relevant bachelor's degree.

A postgraduate certificate is a half-year (full-time) course of study.

NZQF LEVEL QUALIFICATION TYPE

NZQF LEVEL	QUALIFICATION TYPE
1–6	Certificates
5–6	Diplomas
7	Bachelor's degrees Graduate diplomas and certificates
8	Postgraduate diplomas and certificates Bachelor's degrees with honours
9	Master's degrees
10	Doctorates

Masters' degree (NZQF Level 9)

Open to those who have completed a bachelor's degree with good grades and comprises one to two years of advanced study in the student's major discipline.

Doctorate (NZQF Level 10)

Normally the highest academic qualification available within a university. The main doctorate is the PhD (Doctor of Philosophy). This degree can be taken in any one of the wide range of subjects and involves original and sustained research under academic supervision. A PhD usually takes at least three years of full-time study.

Conjoint degrees

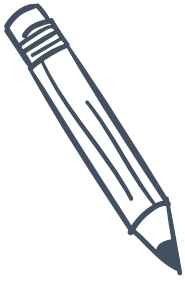
A specialised programme of study that enables a student to complete two bachelor's degrees in a shortened time.



Get ready

Me whakarite koe

Deciding to go to university may seem a little overwhelming for you (and your whānau!) so we have put together a timeline and prepared some information you may find useful to help get your studies off to a great start.



Get planning

Key contact: University Admissions Office

- Make sure you're on track to get University Entrance (UE). If you're unsure, talk to your school.
- Not doing NCEA? See our 'Get in' section (p32–36) for other pathways into university.
- Check the universities' application deadlines (some programmes have earlier closing dates than others).

MAY
Mei

Get connected

Key contacts: University Liaison or Recruitment Officers

- Attend a university visit at your school.
- Go to a university Open Day—take a university tour, experience a university lecture and talk with students taking courses to hear about their experiences.
- Check out a university prospectus.
- Universities have lots of supporting guides as well:
 - information for parents
 - accommodation guides
 - Māori student guides
 - Pacific student guides
 - budgeting and financial planning guides.



Get advice

Key contacts: Student Course Advisers & Finance Advisers

Study related:

Course advisers can help you plan your study year.

Contact the university if you'd like help to:

- Choose your course
- Choose your qualification
- Complete your Application to Enrol
- Plan your timetable.

Money matters:

- Jobs, scholarships, budgeting, living expenses – get advice on money matters.
- See what support your Student Union offers.
- Budget guides are available at each university.

JUN
Hune

Get applying

Key contact: University Admissions Office

- Check (and double-check) the entry requirements for the courses you're applying for. Some courses have specific requirements in addition to UE.
- See our 'Get in' section (p32–36) for more details on what you'll need when applying.

JUL
Hūrae

Get a scholarship

Key contact: University Scholarships Office

Universities and other organisations offer a wide range of scholarships for university study.

There are scholarships to support:

- Academic achievement
- Māori students, Pacific students, students with disabilities, and financial hardship
- Sport and cultural achievement
- Specific subjects.

See our scholarships page (p39) and also:

- **Generosity** www.generosity.org.nz/
- **Māori Education Trust** www.maorieducation.org.nz/index.php/scholarships
- **Universities New Zealand undergraduate scholarships** www.universitiesnz.ac.nz/scholarships



Get a room

Key contacts: Accommodation & Halls of Residence

- Tour the facilities.
- Check application deadlines.
- See our Halls of Residence pages (p40–41).

AUG
Ākuhata



Get funded

Key contacts:
StudyLink & Fees Free websites

Try to apply by 16 December to help get your correct payments on time, even if you haven't finalised where or what you're studying.

See our StudyLink page (p38) and the StudyLink website:
www.studylink.govt.nz

Fees Free?

Check the government's Fees Free website to see if you're eligible:
www.feesfree.govt.nz

NOV

Noema

Get accepted

Key contact:
University Admissions Office

- **Conditional offer of place**

Universities may make you a conditional offer before your school results are released.

- **Formal offer of place**

Universities will send a formal offer once school results are released.

- **Accepting or declining an offer of place**

The university will send you information about accepting or declining an offer of place.

DEC

Tihema

Get under way

Key contacts:
University Student Association

- **Orientation Week (O Week)** is where you'll meet new people and be introduced to the campus, its support teams and services. There are lots of fun things like concerts and club events.
- **Clubs Day** is where you'll find out about the clubs on campus. Sign up to a wide range of sport teams and academic, cultural or social groups.
- **Māori and Pacific** students may be invited to attend a Pōwhiri or another formal welcoming. Your whānau can come too!

JAN

Hānuere

Get it sorted

Key contact:
University Admissions Office

Changing your enrolment

- You can drop, swap or add a course for a limited time at the start of each semester.
- Check the change of enrolment deadlines or you'll be charged for the courses you want to drop.

FEB

Pēpuere

Many scholarships for school leavers are based on Year 12 results.

Did you know NZQA has an NCEA Tracking App?

www.nceatrank.nz

Get a Job

Key contacts:
Student Job Search & NZUni Talent

- If you're going to need a job to help with costs at university, check out Student Job Search.
- Also look at NZUni Talent, an online tool to find work.

Student Job Search
www.sjs.co.nz
NZUni Talent
www.nzunitalent.ac.nz



Get in: Admission to university

Te whakauru mai

How do you get into university? A range of pathways are available. Covid-19 impacts on schooling may lead to changes in university requirements. For the latest information, check our website:

www.thinkingaboutuni.nz

If you need further support, contact a university.

University Entrance through NCEA

University Entrance (UE) is the minimum standard for entrance to a New Zealand university.

To qualify you'll need:

NCEA Level 3

Three subjects at Level 3, made up of:

- 14 credits each in three approved subjects.

Literacy – 10 credits at Level 2 or above, made up of:

- 5 credits in reading.
- 5 credits in writing.

Numeracy – 10 credits at Level 1 or above, made up of:

- Achievement standards—specified achievement standards available through a range of subjects.

OR

- Unit standards—package of three numeracy unit standards (26623, 26626, 2662—all three required).

Check out our 'Other admission pathways' page (p36) if you've missed out on UE.

For more information on UE, go to NZQA's website: www.nzqa.govt.nz/ncea

Te Marautanga o Aotearoa

The University Entrance standard includes approved subjects and achievement standards from Te Marautanga o Aotearoa. Visit NZQA's website for more information: www.bit.ly/3xE1PKE

An NCEA Level 3 certificate

14 credits at Level 3 in an approved subject

14 credits at Level 3 in an approved subject

14 credits at Level 3 in an approved subject

Literacy

10* credits at Level 2 or above (5 in reading, 5 in writing)

Numeracy

10* credits at Level 1 or above

* From specified list of standards. See www.nzqa.govt.nz/ncea



Other school-leaver qualifications

Universities also accept other school-leaver qualifications for admission to an undergraduate degree.

Cambridge Assessment International Examinations (CAIE)

To be eligible for admission, candidates must achieve the following:

Part A

- A minimum of 120 points on the New Zealand CAIE Tariff (refer table) at A or AS Level from any

syllabus groups broadly equivalent to those in the list of approved subjects for NCEA

AND

- A D grade or better in syllabuses from at least three different syllabus groups (excluding Thinking Skills).

Part B

Literacy and numeracy must be satisfied as follows:

Literacy

EITHER

An E grade or better in any one of AS English Language, Language and Literature in English or Literature in English. A D grade or better will satisfy one of the syllabus requirements of Part A.

OR

As prescribed for University Entrance with NCEA.

Numeracy

EITHER

A D grade or better in IGCSE or GCSE mathematics

OR

Any mathematics passed at AS Level. A 'D' grade or better will satisfy one of the syllabus requirements of Part A

OR

As prescribed for University Entrance with NCEA.

NZ CAIE Tariff		
Grade	A Level	AS Level
A*	140	n/a
A	120	60
B	100	50
C	80	40
D	60	30
E	40	20

International Baccalaureate (IB)

Completion of the Diploma (minimum of 24 points).

An IB Diploma completed with English as Language A1 at either Higher or Standard Level and including any mathematics subject satisfies the literacy and numeracy requirements for University Entrance.

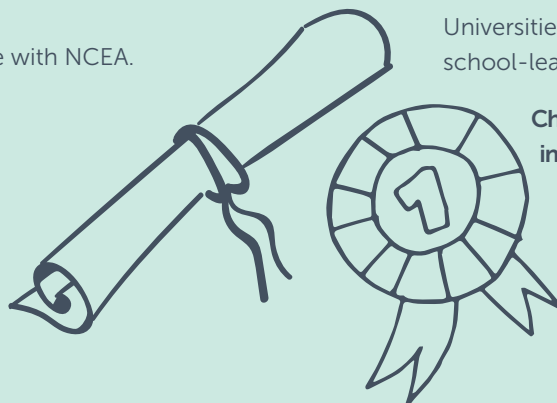
New Zealand Certificate in Steiner Education (Level 3)

A completed Steiner School Certificate Level 3, including 9 points in each of 3 approved subject areas, 8 points in literacy (4 writing/4 reading) and 9 points in numeracy.

Overseas school-leaver qualifications

Universities accept a wide range of overseas school-leaver qualifications for admission.

Check university websites for up-to-date information.





Additional entry requirements

- Some courses of study require you to have taken specific NCEA-approved subjects and gained a minimum number of credits.
- Some courses of study require you to have taken specific achievement standards in certain NCEA-approved subjects.
- Some courses of study also have other entry requirements such as a portfolio, audition and/or interview.

Selective entry

- Selective entry might apply to some courses of study, especially for those with limited or competitive entry.

Guaranteed or preferential entry scores

- Some universities use a rank score system for guaranteed or preferential entry into some courses of study, especially for those with limited or competitive entry. The score is based on the number of Level 3 credits you gain with Excellence, Merit or Achieved.
- You may still be accepted into a course of study if you don't meet the rank score but meet the University Entrance standard. Check with the university for specific details.
- Get the right advice: Check with the university to see if the rank score applies to you and how to calculate your score for that university.

Targeted entry pathways

Some universities have special entry pathways for specific student groups—e.g. Māori, Pacific and students with disabilities.

OTHER ADMISSION PATHWAYS

University preparation courses

Universities and other providers offer university preparation courses for students without University Entrance or an equivalent qualification.

Check with the university to see which courses it accepts as a suitable entry qualification.

If you didn't get University Entrance this may be an option for you! Contact the university to find out more.

University Academic Calendars

A university's Academic Calendar contains a record of all the university's regulations, policies and course information for the academic year.

Even if you've started your study, you can move to another institution!

Discretionary Entrance

If you're a New Zealand or Australian citizen (or permanent resident) who hasn't continued secondary education beyond Year 12, you can apply for Discretionary Entrance based on your Year 12 results.

You'll need to have met certain requirements in your Year 12 results, including a reference from your school principal (or another suitable person), and you may need to do an interview. Discretionary Entrance is only for admission into a specific course of study, not general admission into a university.

Check university websites for more information.

Special Admission for students over 20 (without UE)

If you're over 20 years old and a New Zealand or Australian citizen (or permanent resident) who doesn't have a University Entrance qualification, you can apply for Special Admission.

Check university websites for Special Admission application deadlines and what you'll need to provide with your application.

Transferring students

If you're transferring from one degree to another, you can apply to have the courses you've already completed credited to your new degree.

Get sorted – StudyLink, scholarships, accommodation

Me whakarite koe

- Hoto Akoranga
- Karahipi
- Wharepuni



You'll see in our timeline (p30–31) some key things to think about. This section looks at a few of these in more detail.

StudyLink

Hoto Akoranga

It's important you work out how you're going to fund your study and living costs. Here's an idea about what you'll need to apply to StudyLink.

For all the details on the financial support available from StudyLink, go to studylink.govt.nz/starting-study

Student Loans—Help you to pay for your course fees (the compulsory fees charged by your education provider), study materials (e.g. books, computer) and living costs.

Just remember it's a loan. You'll have to pay this back.

Student allowance—This is a weekly payment that can help with your living expenses while you're studying if you're eligible. You don't have to pay the money back BUT there are conditions.

You can apply for student loans and allowances online. Make sure you have:

- RealME account to apply online and access your My StudyLink.
- RealME verified identity.

The documents you'll need to provide for a RealME account include evidence of:

- Who you are (birth certificate or passport).
- Name change if you've changed your name.
- Your bank account number (verified).
- Your IRD number.

If you're under 18, you'll need to supply some additional information.

Parents, StudyLink can only give you information about *your* part of your child's application (e.g. your income evidence) unless they have appointed you as their agent.

The StudyLink eligibility test is part of the application process. This tells you what you may be eligible for. You'll need to provide the following information:

- Course details (including start and end dates and study break period).
- Citizenship/residency details.
- Income information, if applicable.
- Parents' income information if you're under 24. If you have a child or you're over 24 and have a partner, you'll need to provide additional information. See the StudyLink website for more information.
- IRD number and tax code.

Parents: StudyLink can only give you information about *your* part of your child's application (e.g. your income evidence) unless they have appointed you as their agent.

www.studylink.govt.nz/starting-study/thinking-about-study/information-for-parents.html

www.studylink.govt.nz

0800 88 99 00

www.realme.govt.nz

0800 664 774

www.ird.govt.nz

0800 775 247



Lots of scholarships are available.

Whānau should really encourage their rangatahi to apply.



Scholarships

Scholarships are a smart way to fund your study. Depending on the scholarship, you might need to provide the following supporting documents with your application:

- Personal statement: academic achievements, leadership, sporting, cultural and community achievements and involvement.
- Statement about your study plans and ambitions.
- List of accomplishments, awards and leadership positions.
- Academic results (e.g. NCEA record of achievement).
- References—different scholarships might require different types of references:
- **Academic reference:** supports your academic achievements and ambitions.

Karahipi

- **Character reference:**

- supports your personal qualities and non-academic achievements (e.g. leadership, sporting and cultural activities)
- identify strong referees for each type of reference
- confirm referees are willing to be contacted for a written reference (these are usually confidential and submitted directly to the scholarship administrators)
- provide your referee with information about the scholarships you're applying for and the closing dates.

You should apply for every scholarship you're eligible for and if you're considering more than one university apply for scholarships at each of them.

If you're of Māori descent, make sure you check to see if your iwi offers education scholarships.

Lots of scholarships are available. Whānau should really encourage their rangatahi to apply.

Halls of Residence

Wharepuni

Halls of Residence (also known as residential colleges) are typically for full-time first-year students. They provide a welcoming community to help you settle into university life.

You'll pay rent for your room and in most cases this will cover, food, power and internet costs. Halls are a great place to get academic support and get involved in social events.

Applications often open around August–September so you'll need to ensure you have all the documentation ready to apply. Places are limited.

In most cases, you'll also need to pay a 'bond' or 'deposit' if you accept an offer.

A deposit will often cover things like the bond, administration fees and activities fees. A bond is an advance payment Halls of Residence ask students to pay as security to cover any unpaid rent or damage to the property.

Halls of Residence applications are interested in an applicant's academic achievements and personal qualities and attributes.

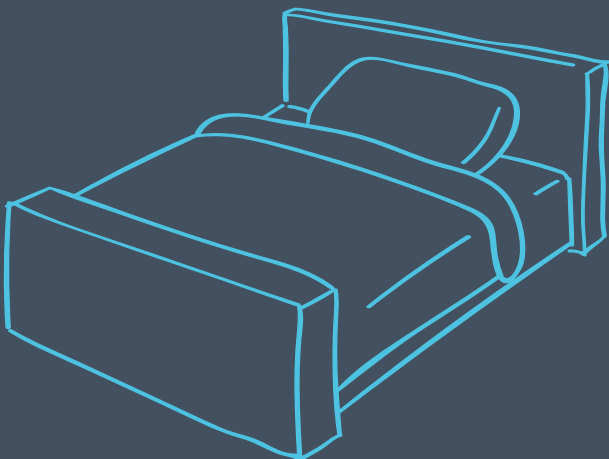
You may need to provide statements and information about the following as part of your Halls of Residence application:

- Leadership, sporting, cultural and community achievements and involvement.
- Your study plans and ambitions.
- Academic results (e.g. NCEA record of achievement).
- A reference from your secondary school.
- Photo—head shot.

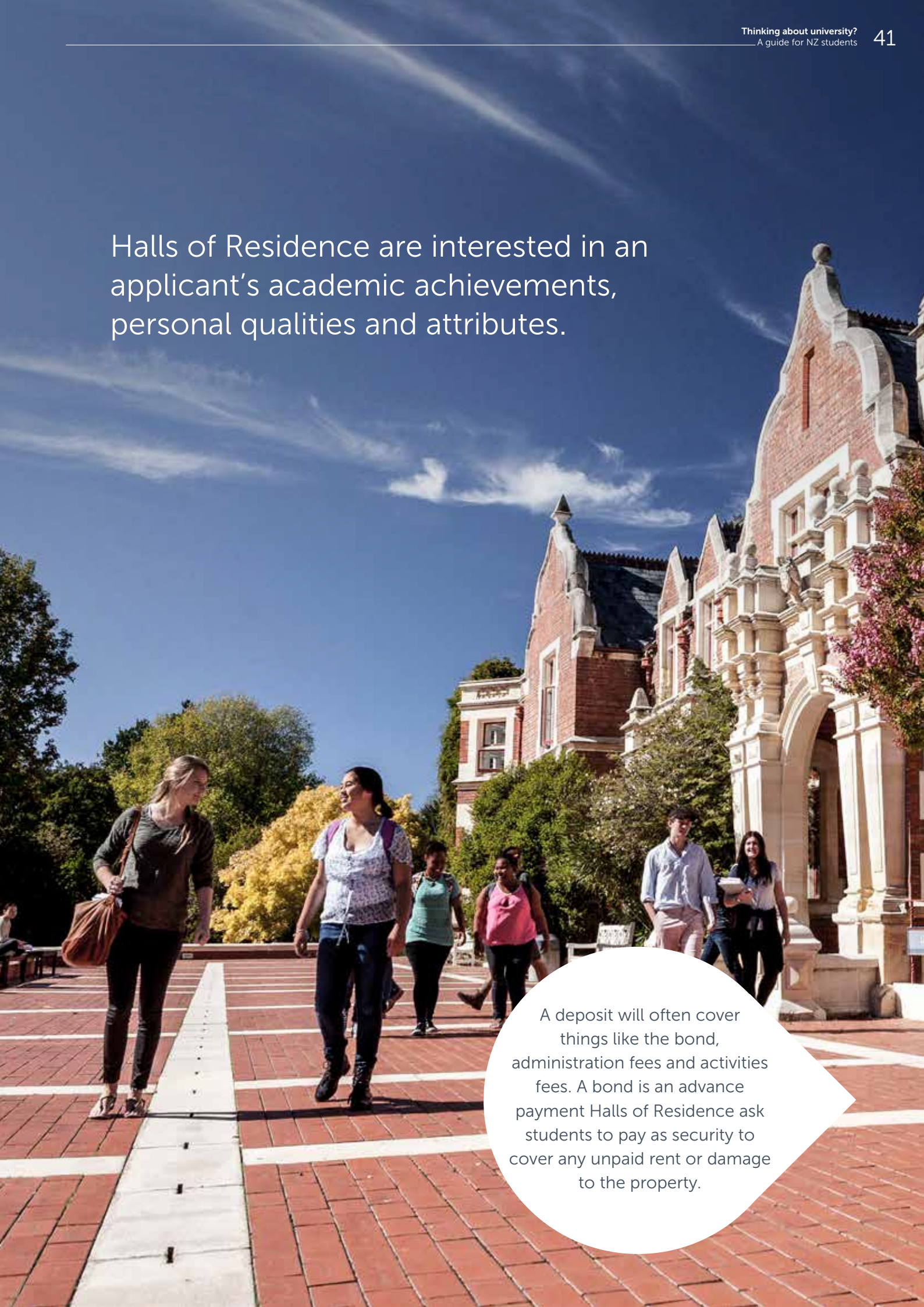
Scholarships are sometimes available to help with Halls of Residence costs. Check out the universities' scholarship pages.

Accommodation

You may choose to flat rather than move into a Hall. The universities have Accommodation Offices that can help find a suitable property to rent. They can also provide information on costs, lease agreements and finding flatmates.



Halls of Residence are interested in an applicant's academic achievements, personal qualities and attributes.



A deposit will often cover things like the bond, administration fees and activities fees. A bond is an advance payment Halls of Residence ask students to pay as security to cover any unpaid rent or damage to the property.

Get more experience

Me whakawhānui te wheako

Universities offer a range of opportunities that'll help you connect and explore life as a student. When you're thinking about which university to attend, also look at the additional experiences on offer.



Study abroad and student exchange

Akoranga kei tawāhi

Experience and explore

Study abroad and student exchange programmes are an opportunity to explore and experience overseas study as part of your NZ degree.

- Earn credits towards your NZ degree.
- Graduate with international experience.
- Pay NZ tuition fees and if you're eligible continue to receive StudyLink loans or allowances (see StudyLink's website for more information: www.studylink.govt.nz).

Summer research scholarships

Karahipi Rangahau o te Raumati

Explore the world of academic research

- Gain valuable research experience.
- Develop your research skills.
- Work with leading researchers.
- Enhance your career opportunities.
- Prepare for the possibility of postgraduate study.

Internships and work placements

Tūranga tauira

Connect

Internships and work placements are an opportunity to connect with industry, all as part of your study experience.

- Apply your learning to 'real-world' situations.
- Develop valuable transferable skills.
- Build your work history.

Further information

To find out more about these opportunities use these 'keywords' to search the university website for more details.

[Study abroad](#)

[Exchange](#)

[Work placements](#)

[Internships](#)


[Summer research](#)

[Summer scholarships](#)

Student life: a typical day

Te noho hei ākonga

To give you an idea of student life, we've put together what a typical day could look like.



LET'S SAY YOU'RE
A FIRST-YEAR BACHELOR OF
EDUCATION (TEACHING) STUDENT
LIVING IN A HALLS OF RESIDENCE
CLOSE TO CAMPUS!

SEMESTER ONE SCHEDULE

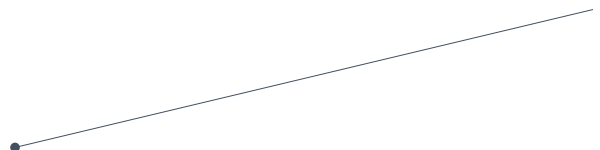
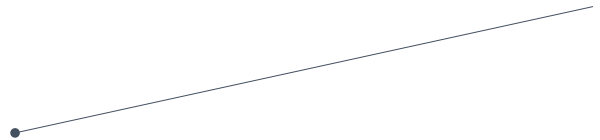
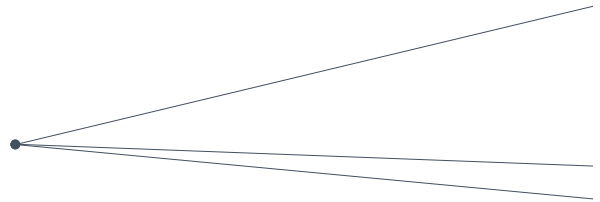
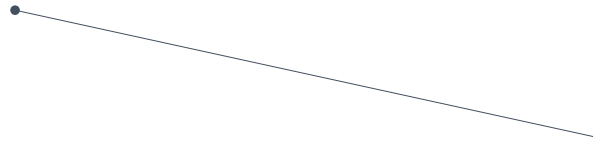
Date _____

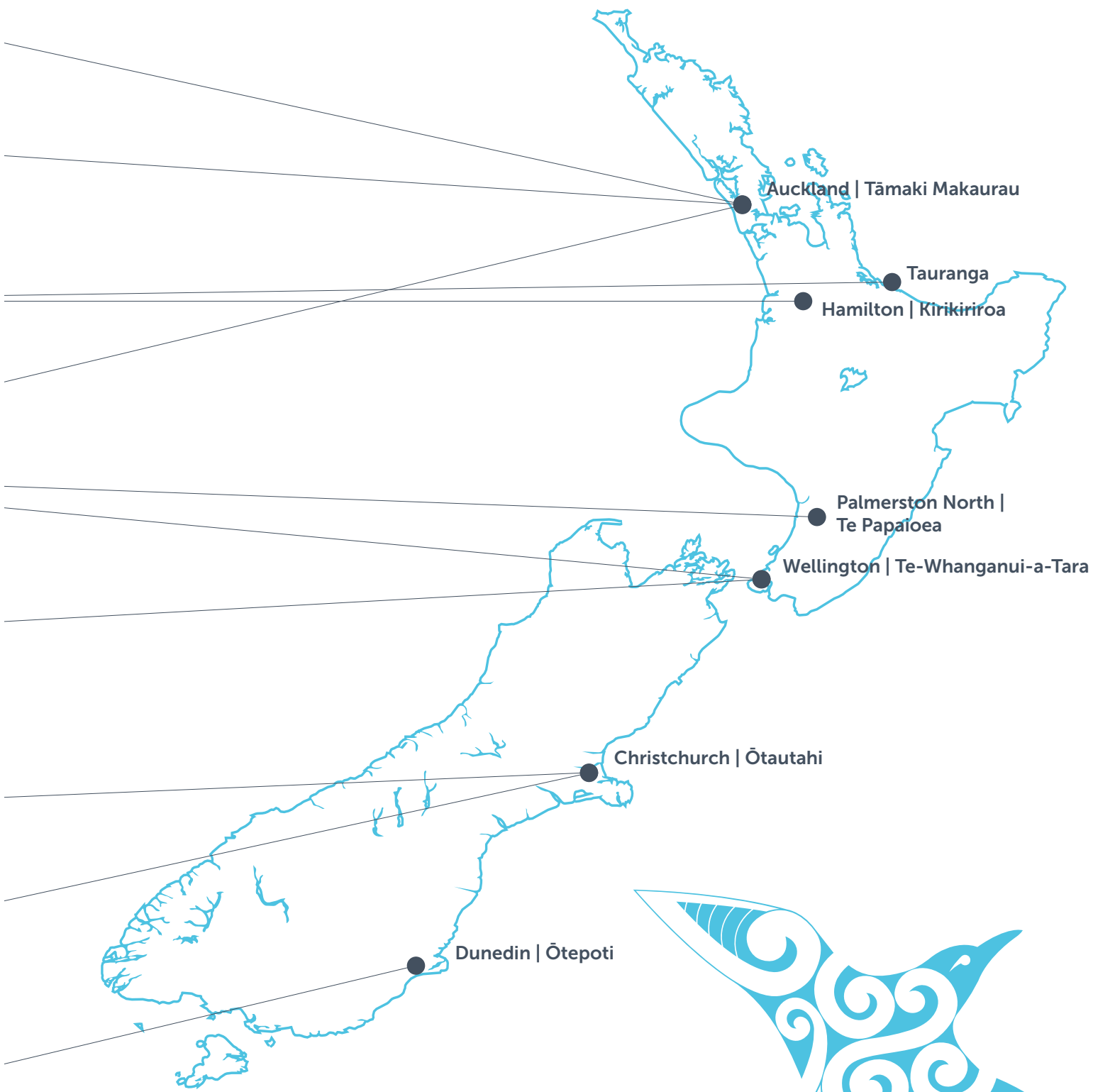


- 8AM:** WAKE UP, GET READY, AND GO TO BREAKFAST IN THE DINING HALL
- 8.45AM:** WALK TO CAMPUS, CATCH UP WITH FRIENDS
- 9AM:** LECTURE 1
- 10AM:** HEAD OFF TO YOUR TUTORIAL CLASS STARTING AT 10AM
- 11AM:** TUTORIAL DONE, TIME TO HEAD OFF TO THE GYM
- 12 NOON:** GO BACK TO THE HALL, SHOWER AND GRAB SOME LUNCH
- 12.45PM:** LECTURE 2 - GUEST LECTURE
- 2.45PM:** GRAB A COFFEE AND GET OVER TO THE STUDENT HUB TO WORK ON YOUR ASSIGNMENT
- 4.30PM:** RETURN TO HALL, MEET UP WITH FRIENDS AND CHILL BEFORE DINNER
- 6PM:** DINNER IN THE DINING HALL
- 7PM:** HEAD TO THE REC ROOM FOR THE HALLS 'MOVIE NIGHT'

*To do: register on Student Job Search website and find a job (www.sjs.co.nz)







Auckland | Tāmaki Makaurau

Tauranga

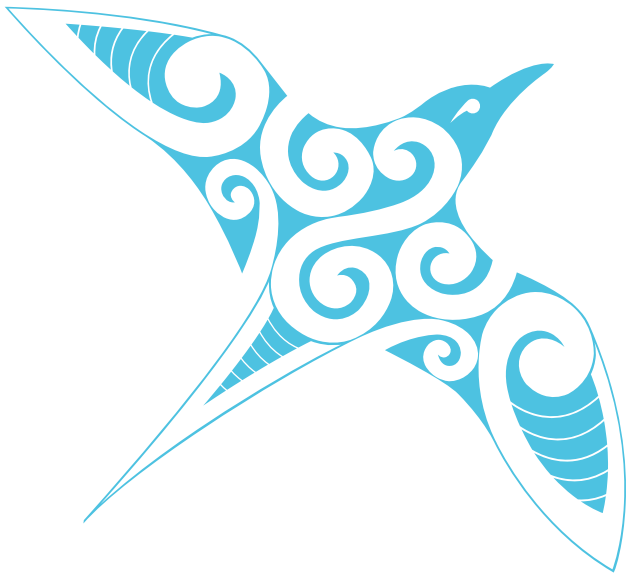
Hamilton | Kirikiriroa

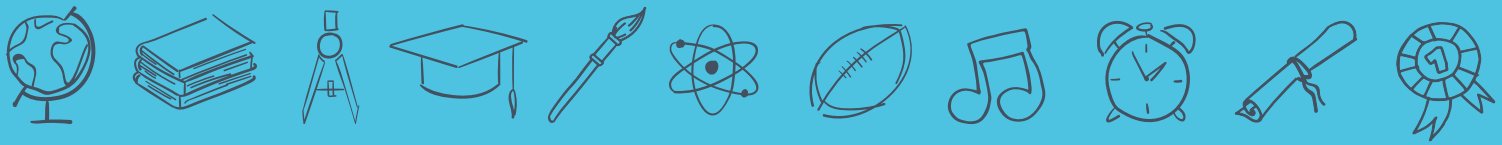
Palmerston North |
Te Papaioea

Wellington | Te-Whanganui-a-Tara

Christchurch | Ōtautahi

Dunedin | Ōtepoti





Te Pōkai Tara
Universities
New Zealand

Universities NZ – Te Pōkai Tara
Level 9, 142 Lambton Quay, Wellington
PO Box 860, Wellington 6140, New Zealand
Telephone: +64 (04) 381 8500

thinkingaboutuni.nz

universitiesnz.ac.nz